

**WORK INSTRUCTIONS FOR REPLACING 180 WATT POWER SUPPLY
 PART NUMBER I3000147 WITH PART NUMBER I3000148 IN XLS-180 LIGHT SOURCE**

**POWER
 SUPPLY
 REMOVAL
 (I3000147)**

Disconnect Power Cord. Remove top cover. Retain screws to reinstall top cover.
 Cut wire tie holding blue and brown power wires (**reference 1**) in between side door cut off switch and front power switch lower connectors. Cut wire tie (**reference 2**) holding same brown wire connections to yellow wires on blue thermal cut of switch attached to transformer on the board.

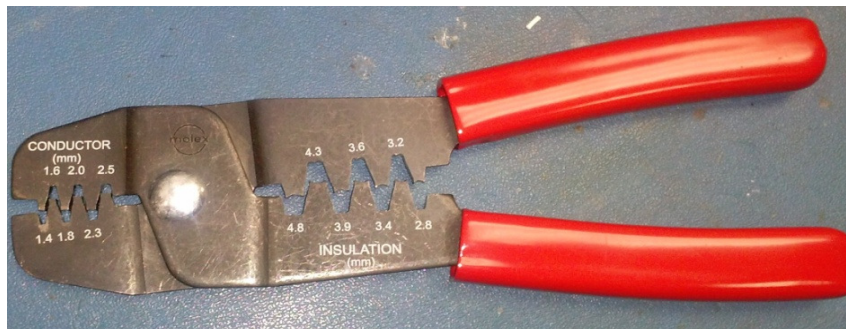
Thermal cut off switch has to be cut out by cutting the both brown power wire ends just before they connect to thermal switch's yellow wire (**reference 2**). Brown power wire ends just cut, have to be spliced and connected using supplied connector # I2000072 supplied in retrofit kit # KIT-XLS-PE-WARNER.



Secure blue and brown power wires with a wire tie I001196000 from the kit (**reference 1**).



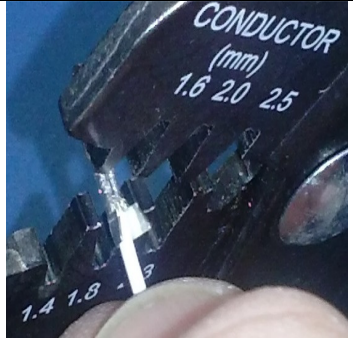
Disconnect all other wiring from power supply using quick disconnects. Remove power supply P/N I3000147 with metal plate, by removing (4) screws and washers on bottom panel. Discard screws and washers.

Cut off Molex connector I3000086 (**reference 3**) with red and blue wire coming to it. On these wires install Molex pins I2000021, using crimper like:

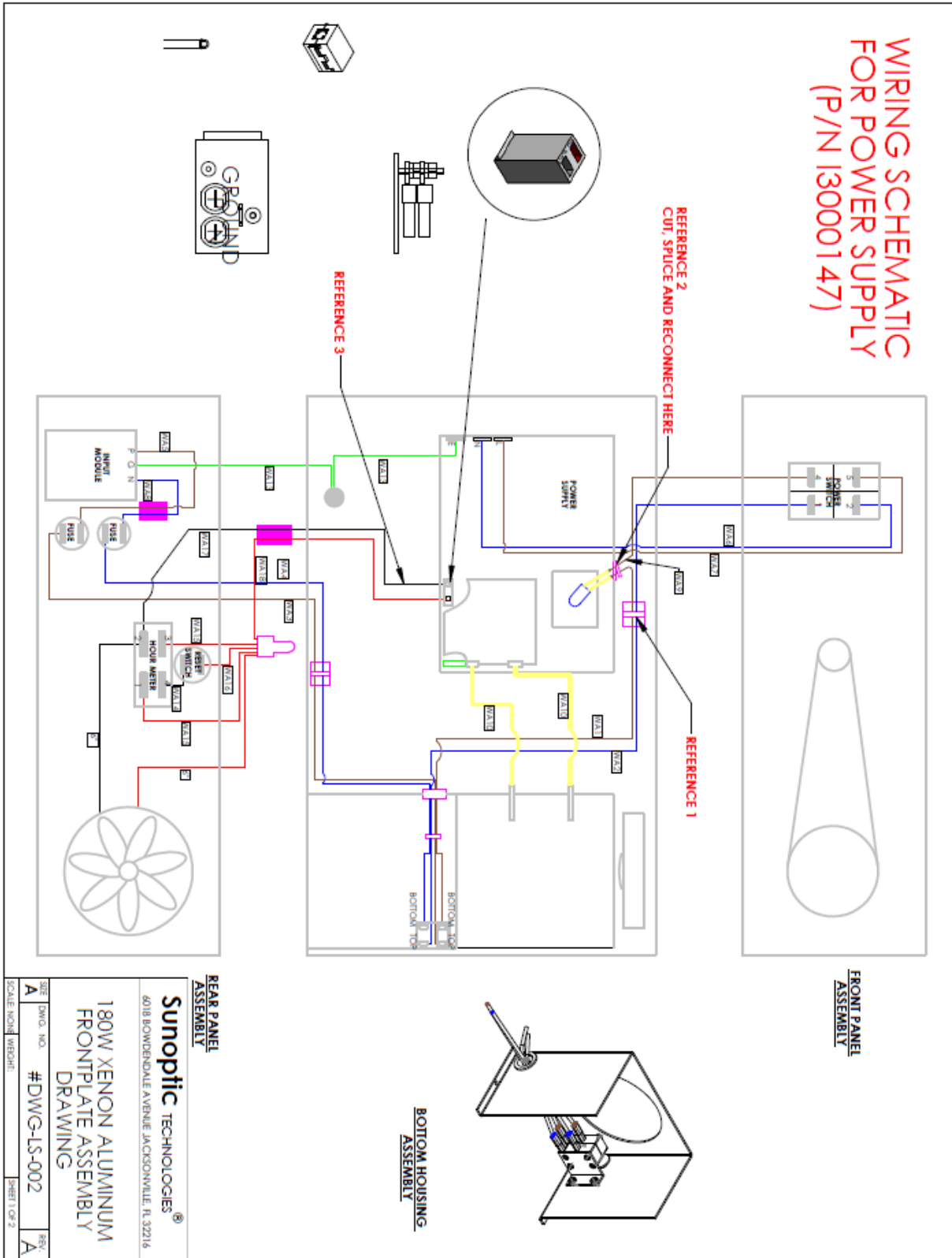


Installing pins is in 3 steps:

- Splice wire and place it in connector
- Crimp spliced wire
- Crimp on wire insulated part
- Insert crimped pins in to connector I2000021

			
LIGHT BULB FRAME WIRING REPLACEMENT	<p>Remove two thick white wires from light bulb frame banana plugs and discard them. In their stead place two wire assemblies of same thickness from replacement kit.</p>		
NEW POWER SUPPLY INSTALLATION (I3000148)	<p>Install new power supply P/N I3000148 using predrilled four holes on bottom of panel. Please note, two holes used will differ from previously used. Install using (4) new standoffs, P/N i1000414, (8) new screws P/N I1398980 and (8) new lock washers P/N I1008600.</p> <p>Reconnect all wiring to new power supply. Green wire to ground terminal, blue wire to terminal N, brown wire to terminal L, and small red and black wire connector to 12 volt terminal on power supply, red on + and blue on - (reference 4). Secure 12 volt connector with plastic wire tie P/N I00119600.</p>		

WIRING SCHEMATIC FOR POWER SUPPLY (P/N 13000147)



REAR PANEL ASSEMBLY	
Sunoptic TECHNOLOGIES®	
4018 BOWDENDALE AVENUE JACKSONVILLE, FL 32216	
180W XENON ALUMINUM FRONTPLATE ASSEMBLY DRAWING	
REV: A	DWG. NO. #DWG-LS-002
SCALE: NONE	METHOD: SHEET 1 OF 2

WIRING SCHEMATIC FOR POWER SUPPLY (P/N 13000148)

